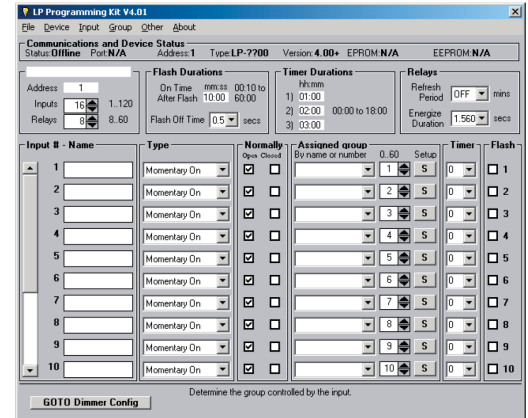


Overview

Panel Configuration Software

LP-PK Programmers Kit provides the capability to program Lumisys Control Panels or Qwik-Kits from a laptop or PC. LP-PK allows you to assign relays to groups as well as assigning your inputs to a particular group. LP-PK Set-Up Software provides an additional means for programming including storing data to diskette, reading data and entering data from diskette.



Specifications:

PC Requirements

- Windows 2000 or XP Operating Systems
- 1Ghz Processor
- 256 MB Ram
- 5 MB of free disk space
- An unused serial port (COM1, COM2, COM3 or COM4)

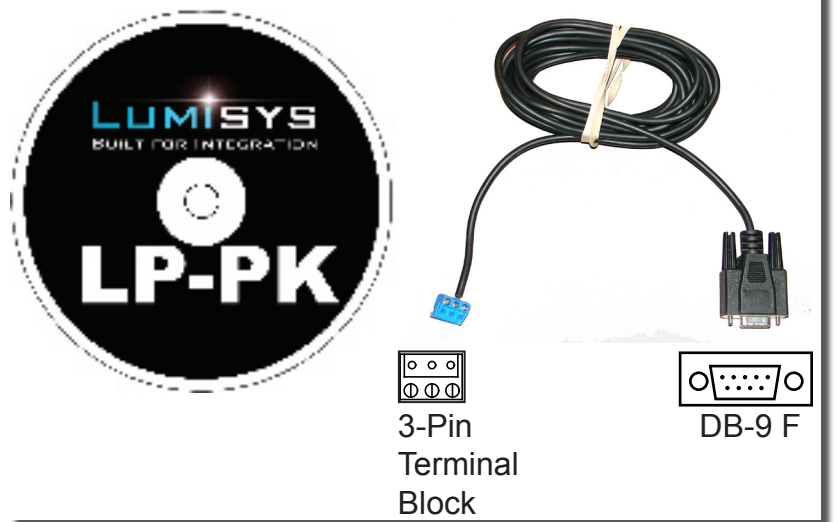
Lumisys Hardware Requirements

Version 1.07 or higher

Cable Requirements

9-pin DB connector cable

Lumisys Panel Programming Kit (LP-PK)



Green Impact



System	Category	Prereq.	LEED Credit
EB	EA	1	-
NC	EA	1	1,6

Effects commissioning.

Ordering Information

Catalog

Description

LP-PK

Lumisys Panel Programming Kit

Includes:

Part#: 235085 - 9-pin DB Interface cable for use with LP-PK
 LP-PK Software on CD

Part#: APT - Apt mini-pin connector for Exec 6.x/ 5.x modules, USB to SI4232 cable.

