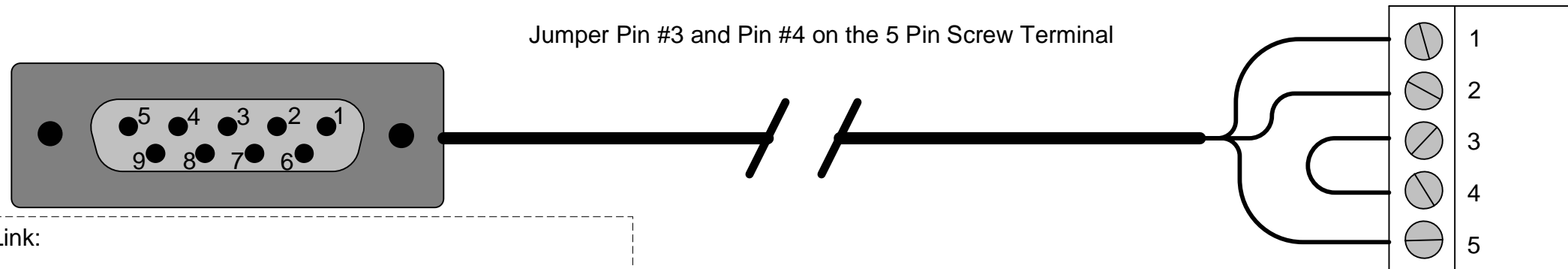


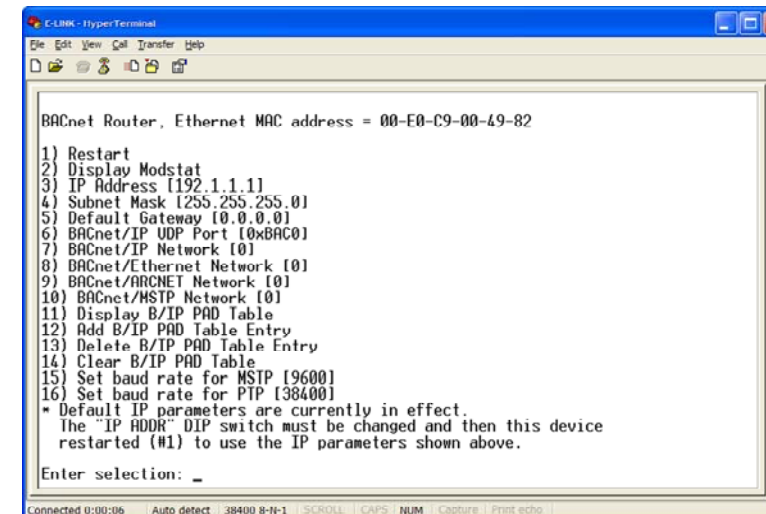
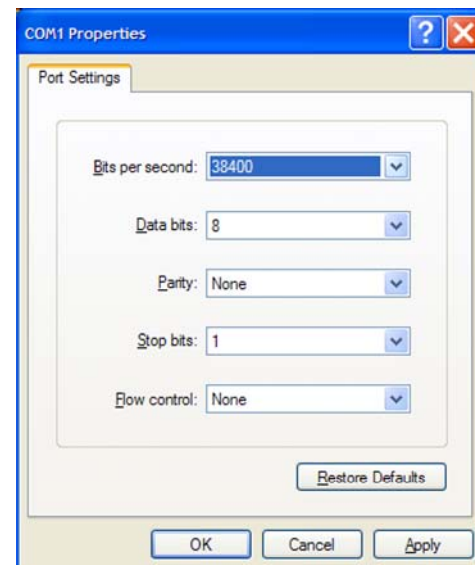
From Standard DB-9 Female Serial Connector : To 5 Pin Screw Terminal
 DB-9 Pin 2 → Pin #1
 DB-9 Pin 3 → Pin #2
 DB-9 Pin 5 → Pin #5

Jumper Pin #3 and Pin #4 on the 5 Pin Screw Terminal



To Change IP Address of the E-Link:

- 1) Switch E-Link power OFF
 - 2) Disconnect all communication wires from E-Link
 - 3) Attach the cable above to the E-Link via Port S2
 - 4) Set Port S2 from EIA-485 to EIA-232
 - 5) Change #1 and #2 Dipswitch setting on E-Link to the ON position. (see users manual)
 - 6) Connect DB-9 cable to Laptop computer.
 - 7) Switch E-Link power ON
 - 8) Open HyperTerminal on windows PC
 - 9) For name type E-Link
 - 10) Select the communication port you are using
 - 11) You communication setting are 38400/8/None/1/None
 - 12) Press "Enter" at the communication screen
 - 13) Enter Selection 3,4,&5 and input new IP connection information
 - 14) When finished switch E-Link Power "OFF"
 - 15) Change #1 Dipswitch setting to OFF position.
 - 16) Disconnect the IP-Configuration Cable
 - 17) Set Port S2 from EIA-232 to EIA-485
 - 18) Reconnect all communication cables.
 - 19) Switch E-Link Power ON
 - 20) Check IP-Address settings
- Done:



TITLE	DATE
E-Link Field Cable	2/9/2005
DESCRIPTION	DRAWN BY
E-Link IP Address Field Cable	John Dyal
REVISED	SCALE PAGE
	NTS 1 of 1